

ShowLED PP75 RGBW

Datasheet

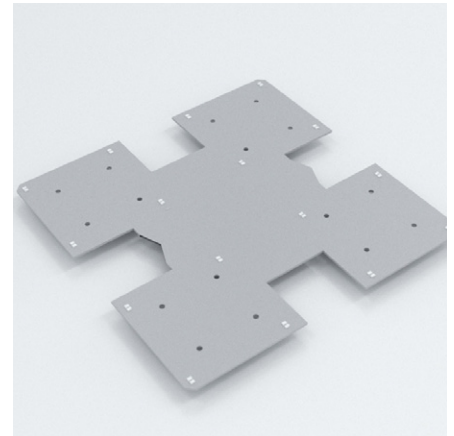
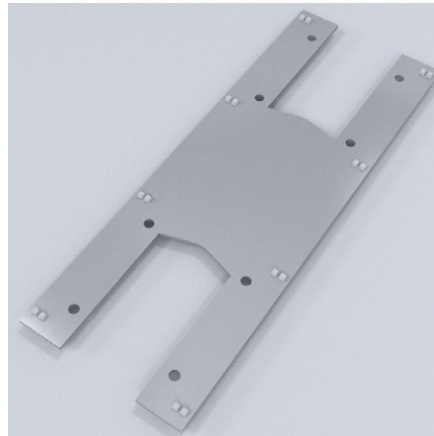
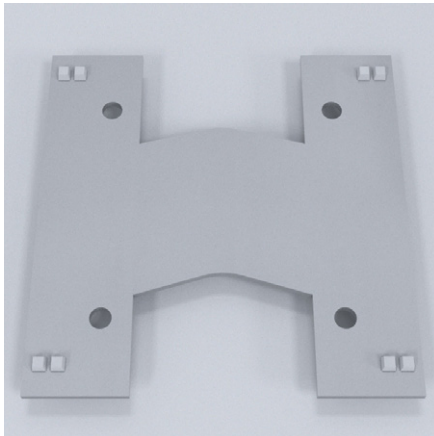


Specification

PP75 are RGBW LED tiles with individual Artnet or DMX pixel control. With or without a front diffuser, multiple tiles can be positioned/joined to create dynamic back-lighting areas of any size. Easy daisy-chain connection with combined power/data cabling to simplify the installation.

Possible applications:

Architecture, stage sets and interiors, dynamic light boxes, stretch ceilings, LED floors or wall panels.



Technical data

Control interface	Artnet/DMX
Pixel distance	75mm
Pixel configuration	Two RGB LEDs and one White LED
Size	240mm x 240mm x 15 mm (Standard)
Brightness	3380 lumen/sqm (11 tiles per sq. m.)
Red dominant wavelength	620 nm
Green dominant wavelength	520 nm
Blue dominant wavelength	470 nm
White LED color temperature	2700 K (Standard)
Processing bits per color	16
Refresh rate	>1000 Hz
LED viewing angle	110 degrees
System voltage	24 V
Minimum pixel working voltage	17 V
Tile power consumption	8W
Power consumption	80 W per sq. m. maximum
Cable type	Combined data/power, 4 cores
Maximum cable length	2.0 m (up to 50m with extenders)
Ambient air operational temperature	-25 ... +40 deg
Hot plug protection	Present
Max. current	333mA